

# STAMISOL

COLOR



**Serge Ferrari** 

# STAMISOL COLOR

The colours and textures represented in this document are provided as a reference only.



Honeysuckle

08109



White

10325



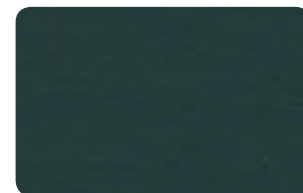
Granite

08119



Hydrangea\*

08111



Coal\*\*

10231



Daffodil\*

08107



Honeysuckle

08109



Orange

08124



Red

10390



Alu lowE\*

08127



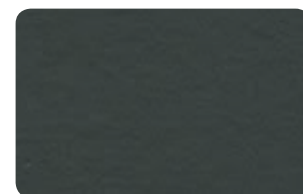
Alu

08125



Iron

08116



Eggplant

08114

\* Available upon special request, with minimum order quantity

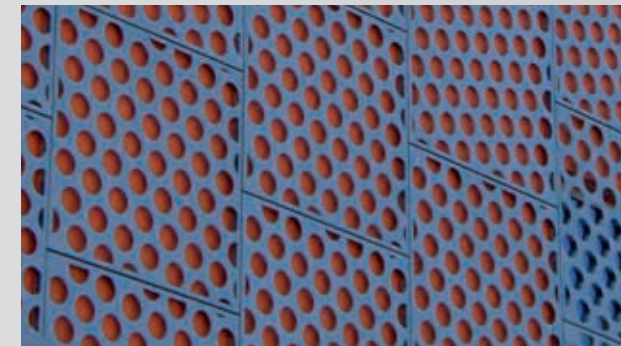
\*\* Available as Stamisol Color HI-FR with additional flame retardance Euroclass B-s2,d0

## MAIN FEATURES

- Wide range of colours
- Long-term resistance to UV rays and heat
- Complete process (with accessories) watertight and breathable
- Fire-rated

## APPLICATIONS

- Waterproofing of very open facades
- Waterproofing of translucent and glass facades
- Usage in contact with insulation or continuous support



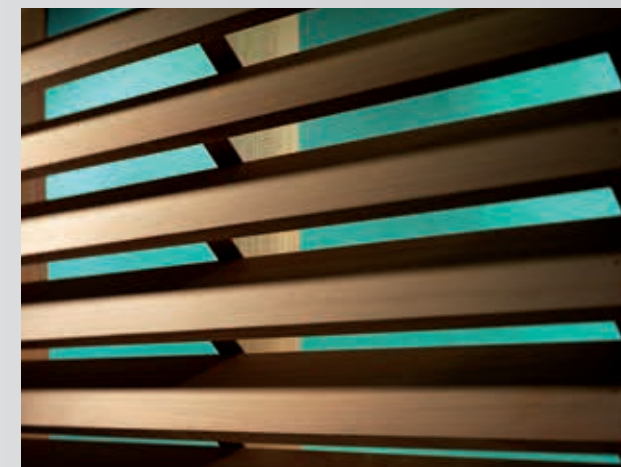
Stamisol Color blends with all types and colours of cladding

## Added aesthetic value

With its palette of 12 contemporary colours, Stamisol Color:

- combines harmoniously with open-work facade facings,
- offers great creative freedom,
- gives depth and contrast to the facade.

Stamisol Color colours coordinate with other Serge Ferrari composite membranes for facades and solar protection.

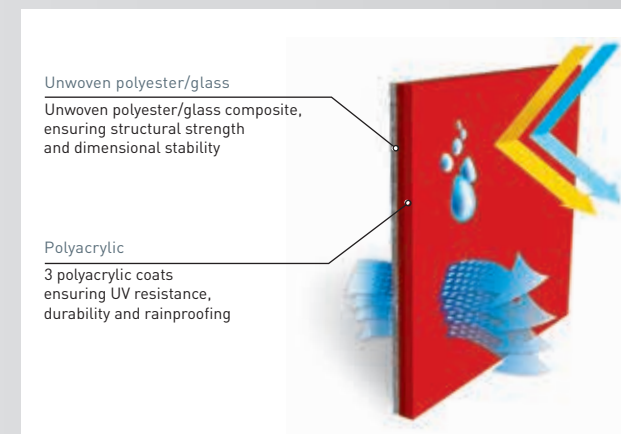


Stamisol Color acts as a thermal regulator

## Efficient thermal insulation

Stamisol Color enhances the building's comfort and energy balance by:

- favouring external insulation,
- protecting insulation from water and wind penetration (efficient insulation),
- preventing condensation risks.



A reinforced back cloth covered with a long-term proven coating

## Long-lasting resistance

Stamisol Color's robust design ensures its essential functions in the long term:

- stability with respect to UV/heat/humidity,
- imperviousness and breathability,
- structural and dimensional stability with respect to wind forces.

Stamisol composite materials draw upon 30 years of experience and are guaranteed for 10 years.

Technical properties	Stamisol Color	Stamisol Color HI-FR	Standards
Coating	Polyacrylic	Polyacrylic	
Composite back cloth	PET/Glass/PET	PET/Glass/PET	
Weight	420 g/m <sup>2</sup>	820 g/m <sup>2</sup>	EN 1848-1
Thickness	0.70 mm	0.75 mm	EN 1849-2
Width	250 cm	250 cm	(-1 mm/+1 mm)
<b>Length of rolls</b>			
Standard format length	25 lm	25 lm	
<b>Mechanical and physical properties</b>			<b>EN 13859-2</b>
Tensile strength (L/T):			EN 12311-1
> Initial	330/330 N/5 cm	400/400 N/5 cm	
> After aging 5000 hours under UV	330/300 N/5 cm	400/350 N/5 cm	
Nail tear strength (L/T)	280/280 N	280/280 N	EN 12310-1
Air layer thickness equivalent S <sub>D</sub>	≈ 0.05 m	≈ 0.12 m	EN ISO 12572-C
Water penetration resistance:			EN 1928
> Initial	W1	W1	
> After aging 5000 hours under UV	W1	W1	
Cold bending	-30°C	-30°C	EN 1109
<b>Additional properties</b>			
Imperviousness to water head	> 600 mm	> 600 mm	EN ISO 20811
Extreme working temperatures	- 40°C / + 80°C	- 40°C / + 80°C	
<b>Flame retardancy</b>			
Rating	<b>M2/NFP 92-507 • VKF 5.3/SN 198898</b>	<b>VKF 5.3/SN 198898</b>	
Euroclass	E	<b>B-s2,d0</b>	EN 13501-1
<b>Management systems</b>			
for Quality			ISO 9001
for the Environment			ISO 14001
<b>Certifications, labels, guarantees, recycling</b>			



The technical data above are average values with a +/- 10% tolerance.

The buyer of our products is fully responsible for their application or their transformation concerning any possible third party. The buyer of our products is responsible for their implementation and installation according to the standards, workmanship and safety regulations in force in destination countries. To ensure warranty effectiveness, refer to warranty certificate concerned available on demand.

The values quoted above represent results of tests performed in compliance with common design practices and are provided for information only to enable customers to make the best use of our products. Our products are subjects to evolutions due to technical progress, we remain entitled to modify the characteristics of our products at any time. The buyer of our products is responsible to check that the here above data are still valid.

## INSTALLATION

- Installed with its range of accessories (glue, seals, connectors, etc.)
- Only by qualified installers to guarantee installation quality.
- Please ask our advice concerning Stamisol Color's usage limits for openwork facades.

## TOOLS AND SERVICES

- Stamisol installation training sessions on request
- Document and photo libraries: [www.sergeferrari.com](http://www.sergeferrari.com)

### → Contact

- Headquarters: + 33 (0)4 74 97 41 33
- Your local representative: [www.sergeferrari.com](http://www.sergeferrari.com)

### → Specification department

[www.sergeferrari.com](http://www.sergeferrari.com)